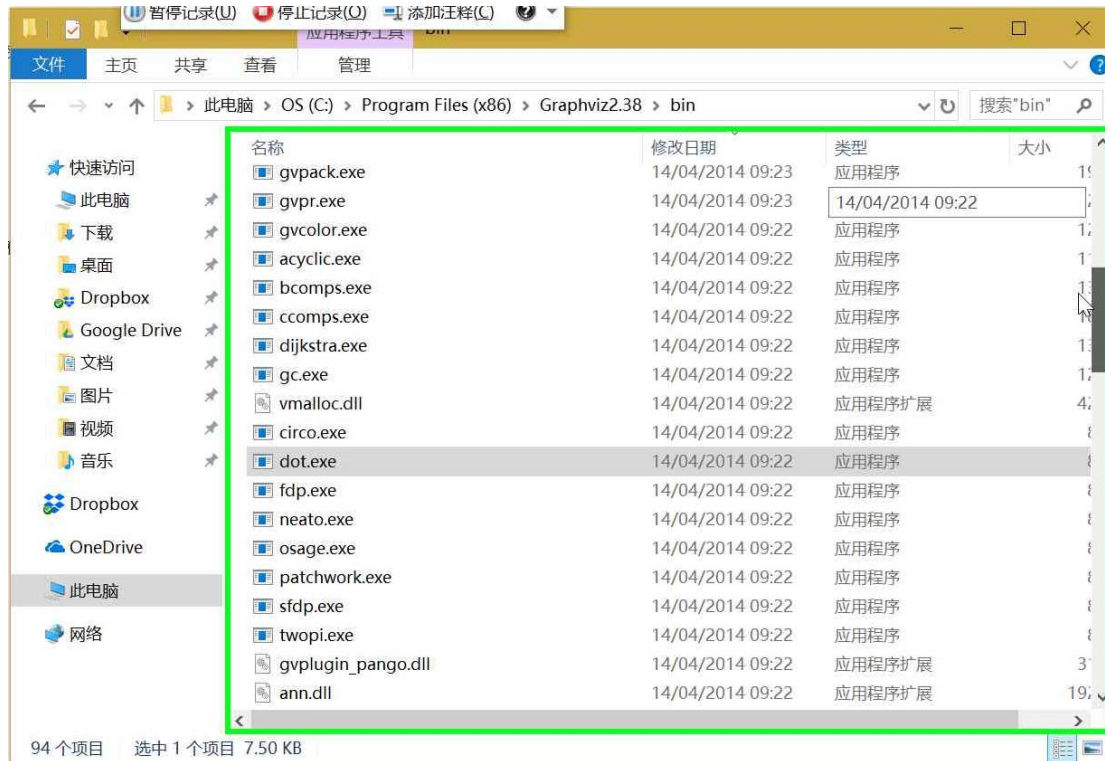
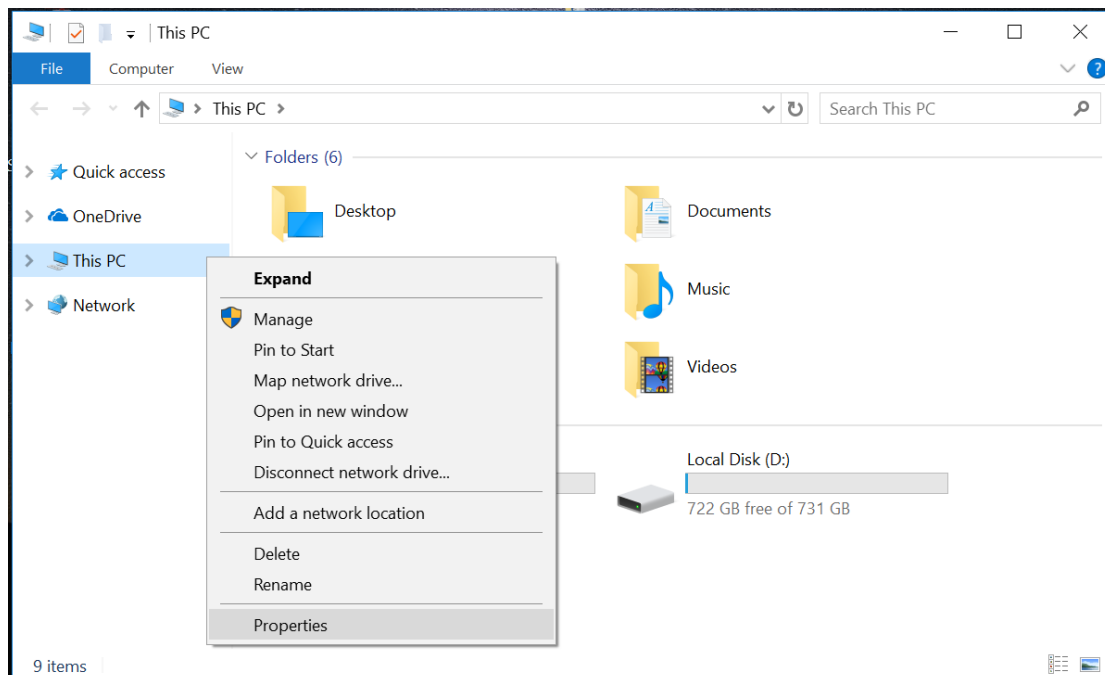


Steps to add Graphviz path to windows environment variables  
Last Update: 2017/11/20

1. Download & install Graphviz and remember the installed location. Download Graphviz from [http://www.graphviz.org/Download\\_windows.php](http://www.graphviz.org/Download_windows.php).
2. Find the dot.exe file path in the Graphviz installed location, normally it's at `C:\Program Files (x86)\Graphviz2.38\bin`. Copy this path to clipboard.

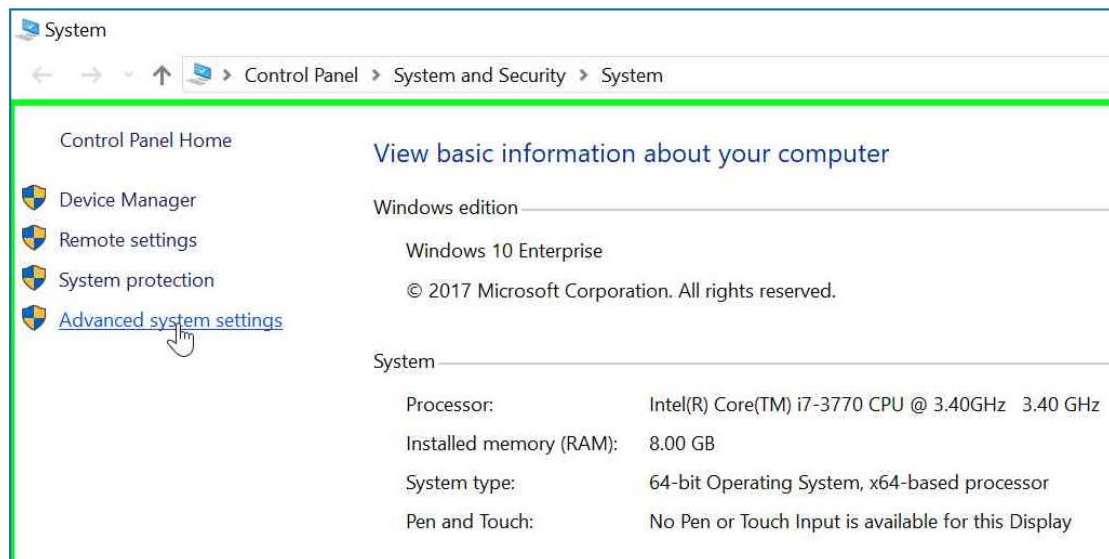


3. Right click "My Computer" and select "Properties" to open system window, go to "Advanced System Settings".

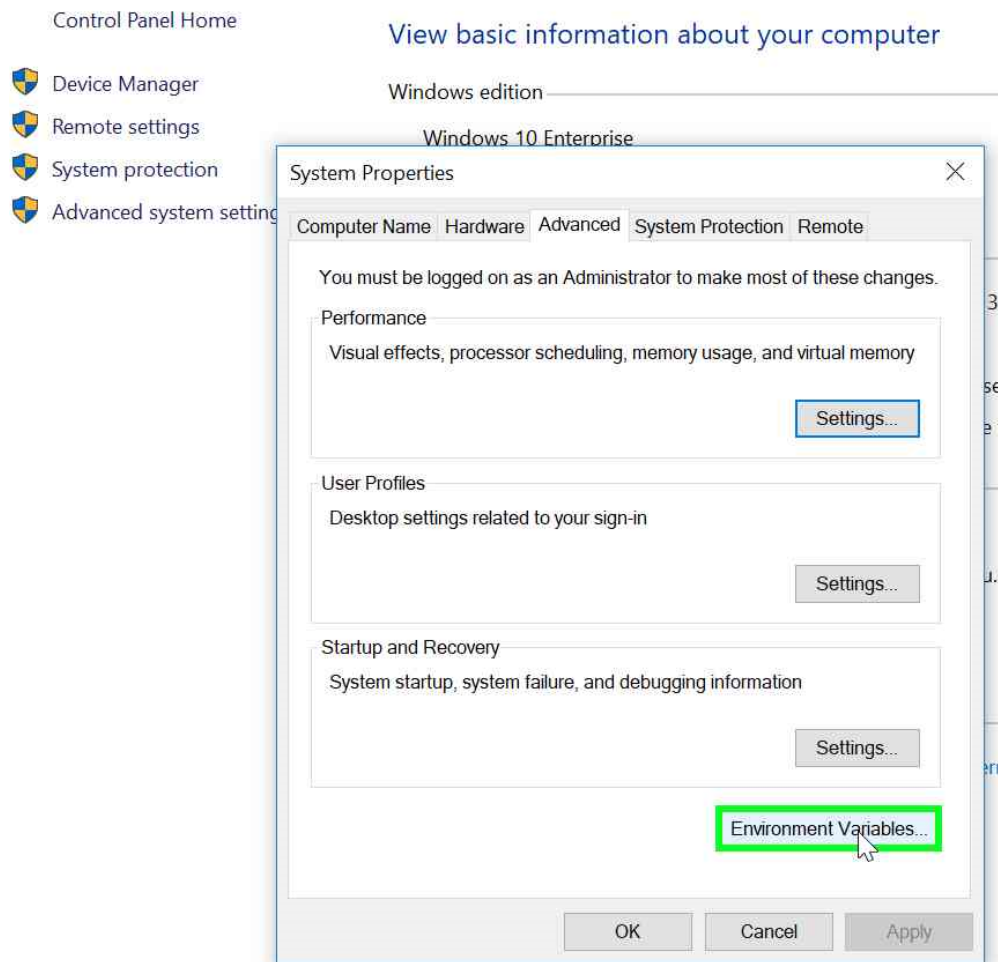


## Steps to add Graphviz path to windows environment variables

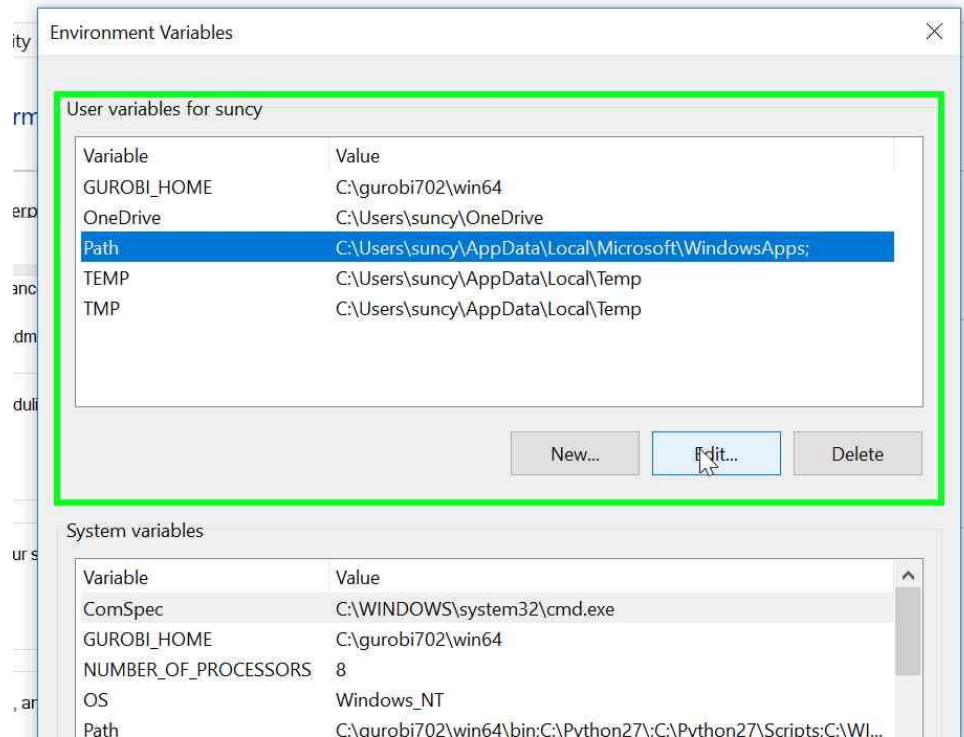
Last Update: 2017/11/20



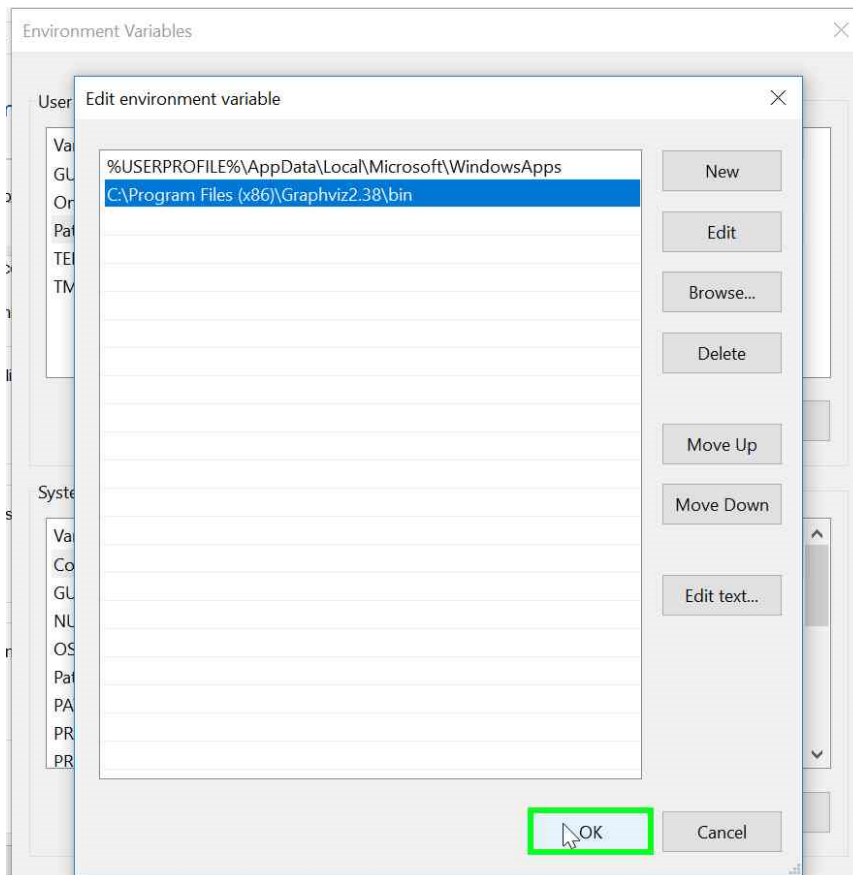
4. Click "Environment Variables" to open new window, Select "path" in "User Variables" and click "Edit".



Steps to add Graphviz path to windows environment variables  
Last Update: 2017/11/20



5. Click "New" and paste the copied path to the path list. Click "OK" for all opened window to save the setting.



6. Restart windows to let the setting take effect.
7. Open Automata Debugger and start using.

# Steps to add Graphviz path to windows environment variables

## Last Update: 2017/11/20

Automata Debugger (Version 0.2)

About

Select Automata

C:\Users\user\lbr Browse

AssemblyTable.cfg  
ConveyorBelt-Part1Sen  
ConveyorBelt-Part2Sen  
ConveyorBelt-Part3Sen  
ConveyorBelt.cfg  
PressMachine-Sensor.  
PressMachine.cfg  
R1.cfg  
Spec-ConveyorBelt.cf  
Spec-F1-AT-FM.cfg  
Spec-F1-AL.cfg  
Spec-F1-FM-CB.cfg  
Spec-F1-FM.cfg

Select All Select None

Load Selected

Execution

Running

NextPossibleEvents(Double Click)

tau

Current Step= 0

Status (click to view graph)

ID	Automata	InitState	MarkerStates	PrevState	CurState	IsMarked	NextAvailableTransitions
1	AssemblyTable	0	1, 4		0		(0, tau, 1)
2	ConveyorBelt-Part1Sensor	0	1, 3				(0, tau, 1)
3	ConveyorBelt-Part2Sensor	0	1, 3				
4	ConveyorBelt-Part3Sensor	0	1, 3				
5	ConveyorBelt	0	1, 2				
6	PressMachine-Sensor	0	1				
7	PressMachine	0	1				
8	R1	0	1, 2, 3				
9	Spec-ConveyorBelt	0	0, 2				
10	Spec-F1-AT-FM	0	0				
11	Spec-F1-AT	0	0, 1				
12	Spec-F1-FM-CB	0	0, 1, 2				
13	Spec-F1-FM	0	0, 1, 2				
14	Spec-F1-ST-AT	0	0				
15	Spec-F2-ST-CB	0	0, 1				
16	Spec-F3-ST-CB	0	0, 1				
17	Spec-R1-emergency	6	0, 5, 6				
18	Storage	0	1				

Graph (AssemblyTable)

Reset

x=5 y=212 scale=0.78 xRatio=0.36 yRatio=0.51 DisplayGcal

Automata Updated in Last Step  
Event Enabled in Automata  
Event Disabled in Automata

Entire Event List:

Highlight Reset

Auto Resize Rows Resize Rows  
Auto Resize Columns Resize Columns